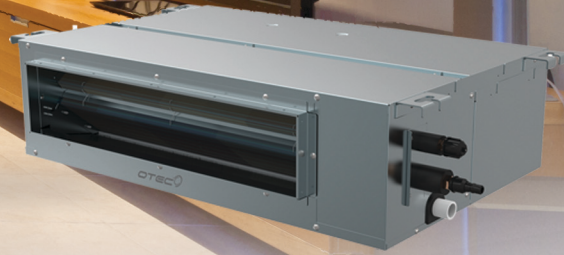


Engineered to elevate efficiency and comfort .....  
..... to the next level!



IESK (009/012)



IESK (018/024)

## IESK SERIES

### Ducted Air Conditioners

#### Inverter Split System 60 Hz

Cooling Nominal: 9,000~24,000 Btuh (2.6~7.0 kW)

Heating Nominal: 9,000~24,000 Btuh (2.6~7.0 kW)

## Product Features

- ✓ 16 SEER in Cooling Mode.
- ✓ Cooling Capacity Down to 1,370 Btuh.
- ✓ Auto Restart.
- ✓ Latest Technologies Inverter Control.
- ✓ Self-Diagnosis.
- ✓ Anti-Mildew Dry Technology.
- ✓ Low Voltage Start Up.
- ✓ LED Backlight.
- ✓ All Boards are treated with HUMISEAL Synthetic Rubber Conformal Coating.

## Outdoor Unit Features

- ✓ DC Inverter Rotary Compressor.
- ✓ Designed for Cooling up to 110F ° ambient.
- ✓ Super Quiet Operation.
- ✓ High Efficiency Coils with cooper tubes/Aluminum Fins.
- ✓ Corrosion resisting cabinet with Protective Coating.
- ✓ Soft Start for all Models.
- ✓ Groved Copper Tubes.
- ✓ Compressor Overload Protection.
- ✓ Over Current Protection.
- ✓ Discharge High Temperature Protection.
- ✓ Time Delay Protection.
- ✓ Low Voltage Startup.
- ✓ PCB treated with HUMISEAL Synthetic Rubber Conformal Coating.
- ✓ Surge Protectors for Voltage fluctuations & Power Surge.

## Indoor Unit Features

- ✓ Wired LCD Remote Control with LED backlight display.
- ✓ Wireless LCD Remote Control with LED backlight display (Optional).
- ✓ Auto Setting for Cooling / Heating / Dehumidifying, Fan.
- ✓ Sleep Mode.
- ✓ Induction touch Control.
- ✓ Turbo Cooling Function with 4 Speed Fan.
- ✓ Timer (On/Off).
- ✓ Cleanable Cartridge Air Filter.
- ✓ Switching Mode Power Supply Design PCB for wide range of power fluctuations.



Wired Controller



Wireless Controller (Optional)





# OMEGA

## INVERTER TECHNOLOGY

Engineered to elevate efficiency and comfort .....  
..... to the next level!

INVERTER  
TECHNOLOGY  
EXPERT

### INDOOR UNIT

MODEL NO.	IESK	009 J2A-YCF026	012 J2A-YCF035	018 J2A-YCF053	024 J2A-YCF070
Cooling Capacity Btuh (kw)	Nominal	9,000 (2.6)	12,000 (3.5)	18,000 (5.2)	24,000 (7.0)
	Minimum	1,370 (0.4)	1,880 (0.6)	3,410 (1.0)	4,780 (1.4)
	Maximum	11,260 (3.3)	13,600 (4.0)	20,500 (6.0)	24,800 (7.3)
Heating Capacity Btuh (kw)	Nominal	9,000 (2.6)	12,000 (3.5)	18,000 (5.2)	24,000 (7.0)
	Minimum	5,460 (1.6)	6,150 (1.8)	10,245 (3.00)	15,375 (4.50)
	Maximum	15,360 (5.5)	16,400 (4.8)	20,500 (6.00)	29,030 (8.50)
Efficiency	SEER	16 (4.7)			
Refrigerant Control		Capillary Tube			
Fan	Type	Cross-Flow			
	Speed	4	4	4	4
	Air Flow CFM (m³/hr) - Hi	350 (600)	350 (600)	540 (920)	770 (1300)
	ESP(Max.) in. W.G (Pa)	0.10 (25)			
	Noise Level (dBa) Hi/Lo	40/22	41/27	43/33	43/33
	Motor Output (Watts)	35	45	60	70
Coil Type:		Grooved Copper Tubes - Aluminum Slit Fin			
Air Filter		Cleanable Cartridge Type			
Electrical	Voltage	220V-1Ph-60Hz			
	Range	min 185- max 265			
	FLA	0.39	0.40	0.57	0.62
Controls		Wired Remote Control			
Refrigerant Connections inches (mm)		See Outdoor Unit Data			
Drain Connections inches (mm)		1 1/4 (32)			
Body Dimensions inches (mm)	Height	7 7/8 (200)	7 7/8 (200)	7 7/8 (200)	7 7/8 (200)
	Width	27 1/2 (700)	27 1/2 (700)	39 3/8 (1000)	51 1/4 (1300)
	Depth	17 3/4 (450)	17 3/4 (450)	17 3/4 (450)	17 3/4 (450)
Body Net Weight Lbs (kgs)		36.3 (16.5)	37.4 (17.0)	50.6 (23.0)	59.4 (27.0)

### OUTDOOR UNIT

MODEL NO.	ICHL	009 J2A-YNG026	012 J2A-YNG035	018 J0A-YNG053	024 J0A-YNG070
Compressor Type		DC Inverter Rotary			
Outdoor Fan	No of Fans	1	1	1	1
	Motor RLA	0.31	0.31	0.80	0.80
	Motor Power Input	28	28	60	60
	Noise Level (dbA)	49	51	60	60
Coil Type:		Aluminum-Fin-copper Tube			
Electrical	Voltage	220V-1Ph-60Hz		220V-1Ph-50/60Hz	
	Range (min-max)	min 185- max 265			
	Cooling Pwr. Input Nom. (W)	790	980	1510	2425
	Min. Circuit Amps (MCA)	5.66	6.33	11.41	12.52
	Max Fuse Amps (MOCP)	10	10	15	15
Refrigerant R410A ( Oz./kgs. )		22.9 / 0.65	24.7 / 0.75	63.5 / 1.80	63.5 / 1.80
Refrigerant Connections inches (mm)	Type	Flare			
	Liquid	1/4 (6.35)	1/4 (6.35)	1/4 (6.35)	3/8 (9.52)
	Suction	3/8 (9.52)	3/8 (9.52)	1/2 (12.7)	5/8 (15.9)
Max Pipe Distance Ft.(m)	Height	33 (10)	33 (10)	33 (15)	33 (15)
	Length	66 (20)	66 (20)	66 (20)	98 (30)
Dimensions inches (mm)	Height	21 1/4 (540)	21 1/4 (540)	27 1/2 (700)	27 1/2 (700)
	Width	32 5/8 (830)	32 5/8 (830)	37 3/4 (960)	37 3/4 (960)
	Depth	12 3/4 (325)	12 3/4 (325)	15 5/8 (396)	15 5/8 (396)
Net Weight	Lbs (kgs)	61 (28)	64 (29)	101 (46)	101 (46)

### IESK SERIES

16 SEER Ducted Air Conditioning

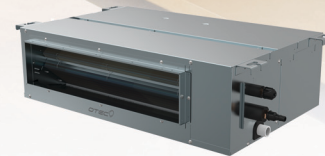
Inverter Split System 60 Hz

Cooling Nominal: 9,000~24,000 Btuh (2.6~7.0 kW)

Heating Nominal: 9,000~24,000 Btuh (2.6~7.0 kW)



IESK (009/012)



IESK (018/024)



Wired Controller



Standard Wireless Controller



ICHL

#### Notes:

1. Nominal capacities are based on ARI standards 210/240-89, air entering the indoor coil operating at high fan speed for 220V setting. Cooling: 80/67 °F (27/19° C) DB/WB indoor & 95° F (35° C) outdoor ambient temperature.
2. Ratings are based on indoor and outdoor connected by 25ft (7.5m) of tubing.
3. Refrigerant metering device is installed at the outdoor unit as standard.
4. Flare fittings are provided for connecting indoor and outdoor units.
5. Insulation of both liquid and suction line is required.
6. Outdoor units are shipped with full operating charge.
7. For details of model number nomenclature, please refer to publication OMGNM-0117.



**OMEGA**  
ENVIRONMENTAL  
TECHNOLOGIES LLC.  
17702 Mitchell North, #101  
Irvine, CA 92614, USA  
Tel: 714 795 2830  
Fax: 714 966 1649  
info@omegainverter.com  
www.omegainverter.com

INVERTER

ISO 14001 ISO 9001

**OTEC**  
AIR CONDITIONING  
Showroom & Technology Center  
11380 Interchange Circle North  
Miramar, FL 33025 . USA  
Tel: 305 731 2140, 888 840 7550  
Fax: 954 212 8280  
info@otecus.com  
www.otecus.com